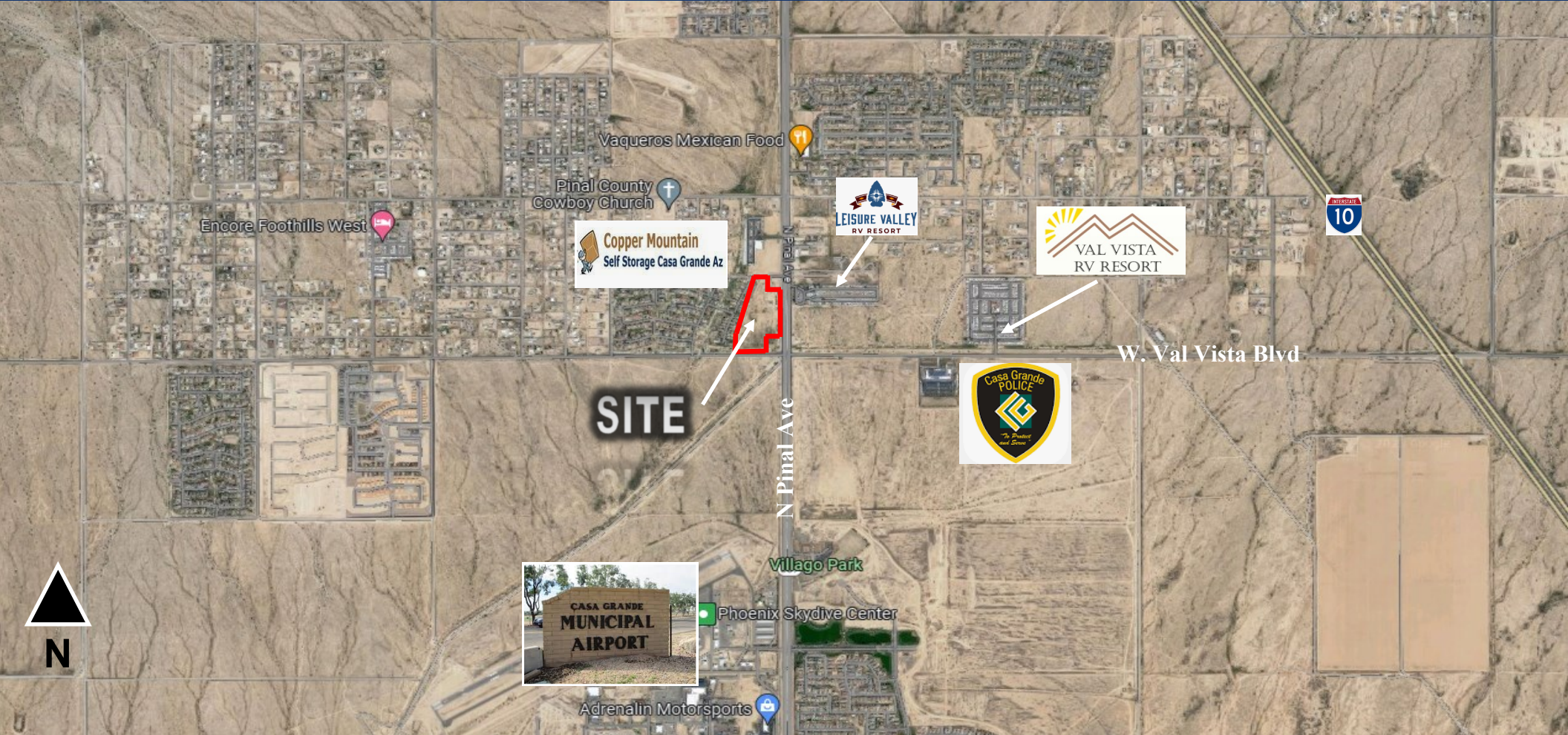


# MULTIFAMILY LAND FOR SALE

## NORTH OF THE NORTHWEST CORNER OF PINAL AVE & VAL VISTA BLVD

### CASA GRANDE, ARIZONA 85122

### \$2,684,821 (\$5.25 PER SF)



**PAUL BLUM, J.D., CCIM**

**602.369.7575**

[paul@blumroberts.com](mailto:paul@blumroberts.com)

**REBECCA ROBERTS**

**602.791.6262**

[rebecca@blumroberts.com](mailto:rebecca@blumroberts.com)

**BLUM-ROBERTS GROUP**



*Unlocking The Value of Real Estate*

This document/email has been prepared by West USA Realty Commercial Division for advertising and general information only. West USA Realty Commercial Division makes no guarantees, representations or warranties of any kind, expressed or implied, regarding the information including, but not limited to, warranties of content, accuracy and reliability. Any interested party should undertake their own inquiries as to the accuracy of the information. West USA Realty Commercial Division excludes unequivocally all inferred or implied terms, conditions and warranties arising out of this document and excludes all liability for loss and damages arising there from. This publication is the copyrighted property of West USA Realty and/or its licensees. © 2023. All rights reserved.

**14350 North 87th Street  
Suite 180  
Scottsdale, AZ 85260**

# CASA GRANDE MULTIFAMILY LAND FOR SALE

## SUMMARY

<b>Address:</b>	<b>North of the Northwest Corner of Pinal Ave &amp; Val Vista Blvd Casa Grande, Arizona 85122</b>
<b>Parcel Size:</b>	<b>±11.74 Acres (±511,394 Square Feet)</b>
<b>APN's:</b>	<b>509-31-003E</b>
<b>Total:</b>	<b>\$2,684,821 (\$5.25 Per Square Foot)</b>
<b>Zoning:</b>	<b>PAD (to be Amended to Permit Multifamily)</b>
<b>Highlights:</b>	<b>Frontage on Pinal: Approximately 622 Feet Frontage on Val Vista: Approximately 424 feet Less Than One Mile From Casa Grande Municipal Airport Approximately 17,500 Vehicles Per Day on Pinal and Val Vista ±2.5 Miles From I-10 ±2 Miles From Fry's, ±4 Miles From Walgreens</b>

**PAUL BLUM, J.D., CCIM**  
**602.369.7575**  
[paul@blumroberts.com](mailto:paul@blumroberts.com)

**REBECCA ROBERTS**  
**602.791.6262**  
[rebecca@blumroberts.com](mailto:rebecca@blumroberts.com)

**BLUM-ROBERTS GROUP**



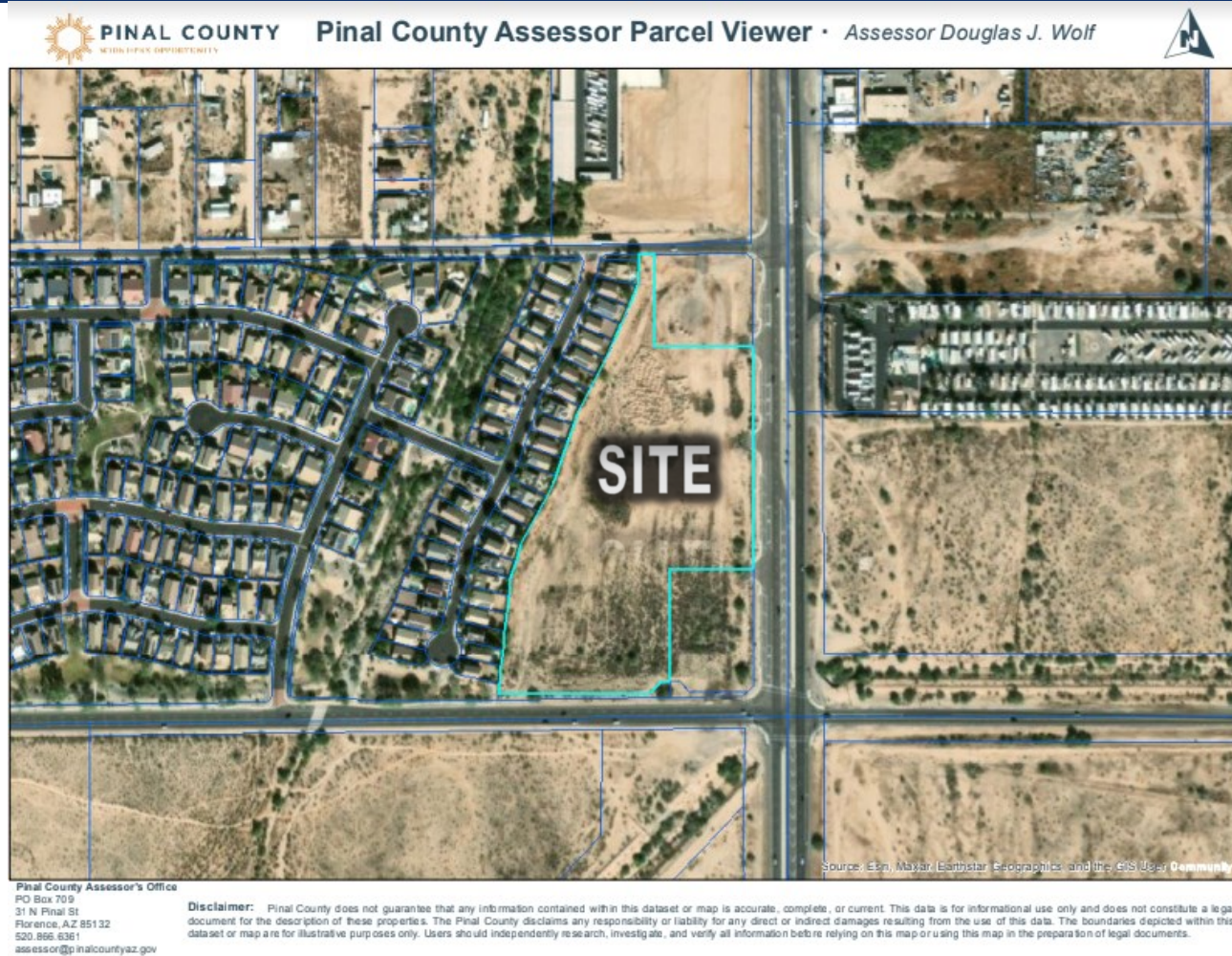
*Unlocking The Value of Real Estate*

This document/email has been prepared by West USA Realty Commercial Division for advertising and general information only. West USA Realty Commercial Division makes no guarantees, representations or warranties of any kind, expressed or implied, regarding the information including, but not limited to, warranties of content, accuracy and reliability. Any interested party should undertake their own inquiries as to the accuracy of the information. West USA Realty Commercial Division excludes unequivocally all inferred or implied terms, conditions and warranties arising out of this document and excludes all liability for loss and damages arising there from. This publication is the copyrighted property of West USA Realty and/or its licensees. © 2023. All rights reserved.

**14350 North 87th Street  
Suite 180  
Scottsdale, AZ 85260**

# CASA GRANDE MULTIFAMILY LAND FOR SALE

## PARCEL MAP



**PAUL BLUM, J.D., CCIM**  
**602.369.7575**  
[paul@blumroberts.com](mailto:paul@blumroberts.com)

**REBECCA ROBERTS**  
**602.791.6262**  
[rebecca@blumroberts.com](mailto:rebecca@blumroberts.com)

**BLUM-ROBERTS GROUP**



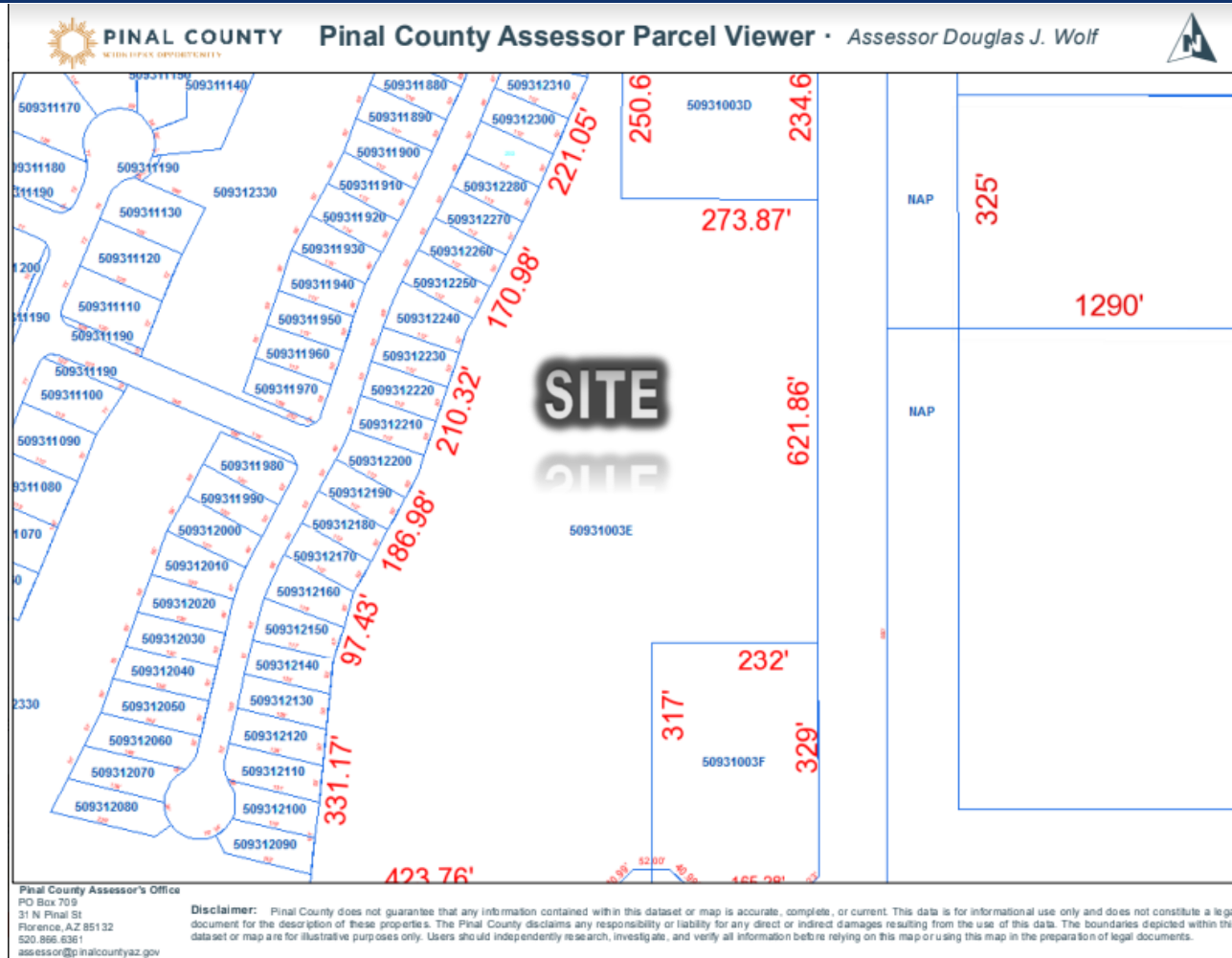
*Unlocking The Value of Real Estate*

This document/email has been prepared by West USA Realty Commercial Division for advertising and general information only. West USA Realty Commercial Division makes no guarantees, representations or warranties of any kind, expressed or implied, regarding the information including, but not limited to, warranties of content, accuracy and reliability. Any interested party should undertake their own inquiries as to the accuracy of the information. West USA Realty Commercial Division excludes unequivocally all inferred or implied terms, conditions and warranties arising out of this document and excludes all liability for loss and damages arising there from. This publication is the copyrighted property of West USA Realty and/or its licensees. © 2023. All rights reserved.

**14350 North 87th Street**  
**Suite 180**  
**Scottsdale, AZ 85260**

# CASA GRANDE MULTIFAMILY LAND FOR SALE

## PARCEL MAP



**PAUL BLUM, J.D., CCIM**  
 602.369.7575  
[paul@blumroberts.com](mailto:paul@blumroberts.com)

**REBECCA ROBERTS**  
 602.791.6262  
[rebecca@blumroberts.com](mailto:rebecca@blumroberts.com)

**BLUM-ROBERTS GROUP**



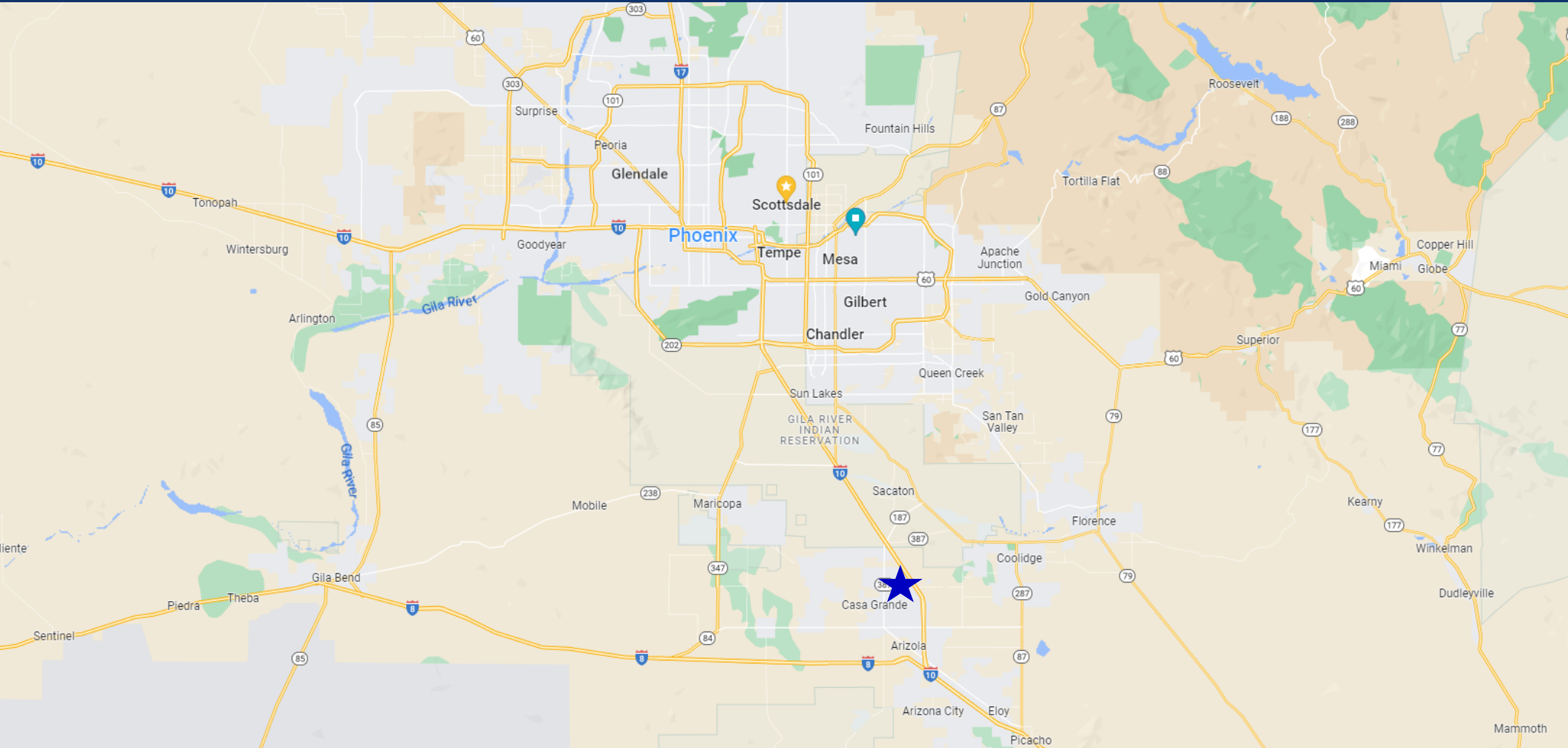
*Unlocking The Value of Real Estate*

This document/email has been prepared by West USA Realty Commercial Division for advertising and general information only. West USA Realty Commercial Division makes no guarantees, representations or warranties of any kind, expressed or implied, regarding the information including, but not limited to, warranties of content, accuracy and reliability. Any interested party should undertake their own inquiries as to the accuracy of the information. West USA Realty Commercial Division excludes unequivocally all inferred or implied terms, conditions and warranties arising out of this document and excludes all liability for loss and damages arising there from. This publication is the copyrighted property of West USA Realty and/or its licensees. © 2023. All rights reserved.

**14350 North 87th Street**  
**Suite 180**  
**Scottsdale, AZ 85260**

# CASA GRANDE MULTIFAMILY LAND FOR SALE

## REGIONAL MAP



**PAUL BLUM, J.D., CCIM**  
**602.369.7575**  
[paul@blumroberts.com](mailto:paul@blumroberts.com)

**REBECCA ROBERTS**  
**602.791.6262**  
[rebecca@blumroberts.com](mailto:rebecca@blumroberts.com)

**BLUM-ROBERTS GROUP**



*Unlocking The Value of Real Estate*

This document/email has been prepared by West USA Realty Commercial Division for advertising and general information only. West USA Realty Commercial Division makes no guarantees, representations or warranties of any kind, expressed or implied, regarding the information including, but not limited to, warranties of content, accuracy and reliability. Any interested party should undertake their own inquiries as to the accuracy of the information. West USA Realty Commercial Division excludes unequivocally all inferred or implied terms, conditions and warranties arising out of this document and excludes all liability for loss and damages arising there from. This publication is the copyrighted property of West USA Realty and/or its licensees. © 2023. All rights reserved.

**14350 North 87th Street**  
**Suite 180**  
**Scottsdale, AZ 85260**