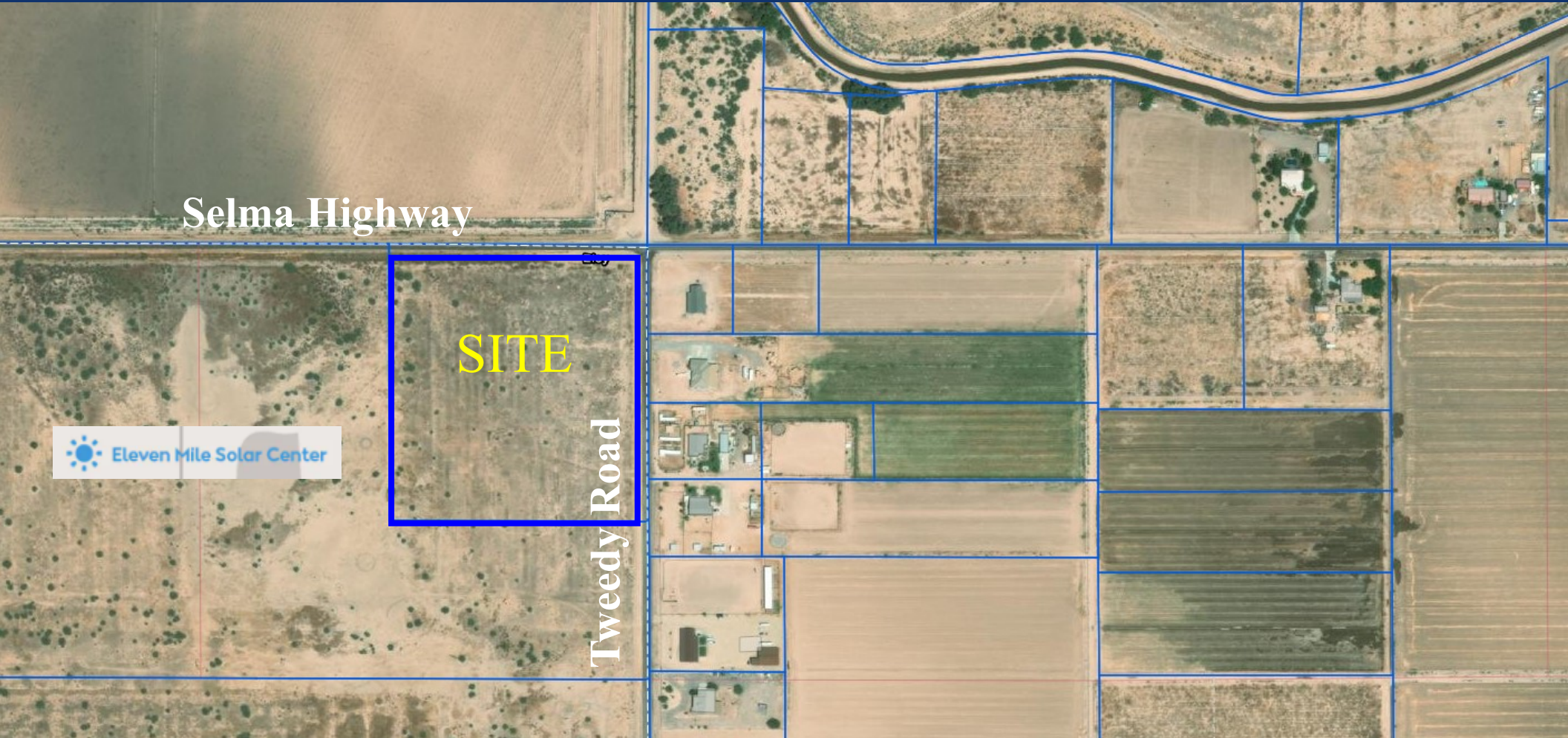


**FOR SALE: ADJACENT TO 11 MILE SOLAR CENTER AND 15 MINUTES FROM LUCID MANUFACTURING PLANT**

**SWC SELMA HIGHWAY & TWEEDY ROAD  
ELOY, ARIZONA**

**\$650,000  
±15 ACRES OF LAND**



**PAUL BLUM, J.D., CCIM**  
**602.369.7575**  
[Paulblum@WestUSA.com](mailto:Paulblum@WestUSA.com)

**REBECCA ROBERTS**  
**602.791.6262**  
[Rebeccaroberts@WestUSA.com](mailto:Rebeccaroberts@WestUSA.com)

**BLUM-ROBERTS GROUP**



*Unlocking The Value of Real Estate*

This document/email has been prepared by West USA Realty Commercial Division for advertising and general information only. West USA Realty Commercial Division makes no guarantees, representations or warranties of any kind, expressed or implied, regarding the information including, but not limited to, warranties of content, accuracy and reliability. Any interested party should undertake their own inquiries as to the accuracy of the information. West USA Realty Commercial Division excludes unequivocally all inferred or implied terms, conditions and warranties arising out of this document and excludes all liability for loss and damages arising there from. This publication is the copyrighted property West USA Realty and /or its licensor(s). © 2022. All rights reserved.

**Kierland Corporate Center**  
7077 E. Marilyn Rd., Bldg. 4 Ste. 207  
Scottsdale, AZ 85254

# ADJACENT TO 11 MILE SOLAR CENTER AND 15 MINUTES FROM LUCID MANUFACTURING PLANT

## SUMMARY

|                    |   |
|--------------------|---|
| <b>Address:</b>    | <b>SWC Selma Highway &amp; Tweedy Road<br/>Eloy, Arizona</b>  |
| <b>Size:</b>       | <b>15 Acres</b>   |
| <b>Sale Price:</b> | <b>\$650,000</b>  |
| <b>APN:</b>        | <b>402-03-008J, Pinal County</b>  |
| <b>Zoning:</b>     | <b>C-2, City of Eloy</b>  |
| <b>Highlight:</b>  | <b>Adjacent to Approved 11 Mile Solar Center, the<br/>Largest Solar Project in Arizona<br/>15 Minutes from Lucid Manufacturing Plant in Eloy<br/>Relatively Flat Topography</b> |

**PAUL BLUM, J.D., CCIM**  
**602.369.7575**  
[Paulblum@WestUSA.com](mailto:Paulblum@WestUSA.com)

**REBECCA ROBERTS**  
**602.791.6262**  
[Rebeccaroberts@WestUSA.com](mailto:Rebeccaroberts@WestUSA.com)

**BLUM-ROBERTS GROUP**



*Unlocking The Value of Real Estate*

This document/email has been prepared by West USA Realty Commercial Division for advertising and general information only. West USA Realty Commercial Division makes no guarantees, representations or warranties of any kind, expressed or implied, regarding the information including, but not limited to, warranties of content, accuracy and reliability. Any interested party should undertake their own inquiries as to the accuracy of the information. West USA Realty Commercial Division excludes unequivocally all inferred or implied terms, conditions and warranties arising out of this document and excludes all liability for loss and damages arising there from. This publication is the copyrighted property West USA Realty and /or its licensor(s). © 2022. All rights reserved.

**Kierland Corporate Center**  
7077 E. Marilyn Rd., Bldg. 4 Ste. 207  
Scottsdale, AZ 85254

# ADJACENT TO 11 MILE SOLAR CENTER AND 15 MINUTES FROM LUCID MANUFACTURING PLANT


## ABOUT 11 MILE SOLAR CENTER

### About the project

Located in Pinal County, Arizona, the 300 MW Eleven Mile Solar Center will use over 850,000 solar panels mounted on single-axis tracker arrays that follow the sun to generate electricity. Almost 63,800 Arizonan homes can be powered with more than 900,000 MWh of energy generated annually. The Eleven Mile Solar Center helps meet the energy needs of the state by providing clean, flexible, solar-powered electricity.

The Eleven Mile Solar Center is a long-term asset for Pinal County. Located on 2,100 acres, the center will create long-term value for landowners hosting the project while stimulating the local economy. The project will generate tens of millions in new tax revenue over the project life without adding new costs for services. Tax revenue will benefit Coolidge USD, Casa Grande ESD, Casa Grande UHS, the Central Arizona College, the City of Eloy, the City of Coolidge, and Pinal County. In addition the project will create at least 300 jobs during construction and will require ongoing support for operations and maintenance over the 30 year estimated life of the project.

|                          |                              |
|--------------------------|------------------------------|
| Location:                | Pinal County, AZ             |
| Solar Capacity:          | 300 MW <sub>AC</sub>         |
| Solar Technology:        | Photovoltaic panels          |
| Owner & Developer:       | Ørsted Onshore North America |
| Interconnecting Utility: | Salt River Project           |
| Operations:              | Estimated 2023               |
| Total annual energy:     | Enough to power 63,800 homes |
| Construction Jobs:       | 300                          |



**PAUL BLUM, J.D., CCIM**  
**602.369.7575**  
[Paulblum@WestUSA.com](mailto:Paulblum@WestUSA.com)

**REBECCA ROBERTS**  
**602.791.6262**  
[Rebeccaroberts@WestUSA.com](mailto:Rebeccaroberts@WestUSA.com)

**BLUM-ROBERTS GROUP**



*Unlocking The Value of Real Estate*


This document/email has been prepared by West USA Realty Commercial Division for advertising and general information only. West USA Realty Commercial Division makes no guarantees, representations or warranties of any kind, expressed or implied, regarding the information including, but not limited to, warranties of content, accuracy and reliability. Any interested party should undertake their own inquiries as to the accuracy of the information. West USA Realty Commercial Division excludes unequivocally all inferred or implied terms, conditions and warranties arising out of this document and excludes all liability for loss and damages arising there from. This publication is the copyrighted property West USA Realty and /or its licensor(s). © 2022. All rights reserved.

**Kierland Corporate Center**  
7077 E. Marilyn Rd., Bldg. 4 Ste. 207  
Scottsdale, AZ 85254




# ADJACENT TO 11 MILE SOLAR CENTER AND 15 MINUTES FROM LUCID MANUFACTURING PLANT

## VALUATION



### TREASURER PARCEL INQUIRY



**PINAL COUNTY**  
WIDE OPEN OPPORTUNITY

**402-03-008J6**
**New Parcel**
**Parcel Inquiry Home**
**Treasurer Home**
**Contact Us**
**Help**

**PARCEL INQUIRY** ▲

TAX SUMMARY

TAX BILL/COUPON

TAX YEAR DUE

PAYMENT HISTORY

APPLIED INT/FEES

VALUATIONS

OWNER HISTORY

SPLIT HISTORY

UPDATE ADDRESS

TAX BILL ESTIMATOR

eNOTICES ONLINE

### Valuations

Click the Tax Area Code shown below to see applicable rates.

Tax Year:  Tax Area Code: [0447](#) Use Class: 0004 [View Assessor Information](#)

| Assessor Valuations |       |                                | Primary (LPV): \$8,090 |         | Secondary (FCV): \$17,462 |        |              |
|---------------------|-------|--------------------------------|------------------------|---------|---------------------------|--------|--------------|
| Levy Type           | Legal | Legal Class                    | Value Type             | Value   | Ratio                     | Exempt | Net Assessed |
| Primary             | 02R   | Ag/Vacant Land/Non-Profit Real | Land                   | 53,936  | 0.1500                    | 0      | \$8,090      |
| Secondary           | 02R   | Ag/Vacant Land/Non-Profit Real | Land                   | 116,411 | 0.1500                    | 0      | \$17,462     |

**PAUL BLUM, J.D., CCIM**  
**602.369.7575**  
[Paulblum@WestUSA.com](mailto:Paulblum@WestUSA.com)

**REBECCA ROBERTS**  
**602.791.6262**  
[Rebeccaroberts@WestUSA.com](mailto:Rebeccaroberts@WestUSA.com)

**BLUM-ROBERTS GROUP**



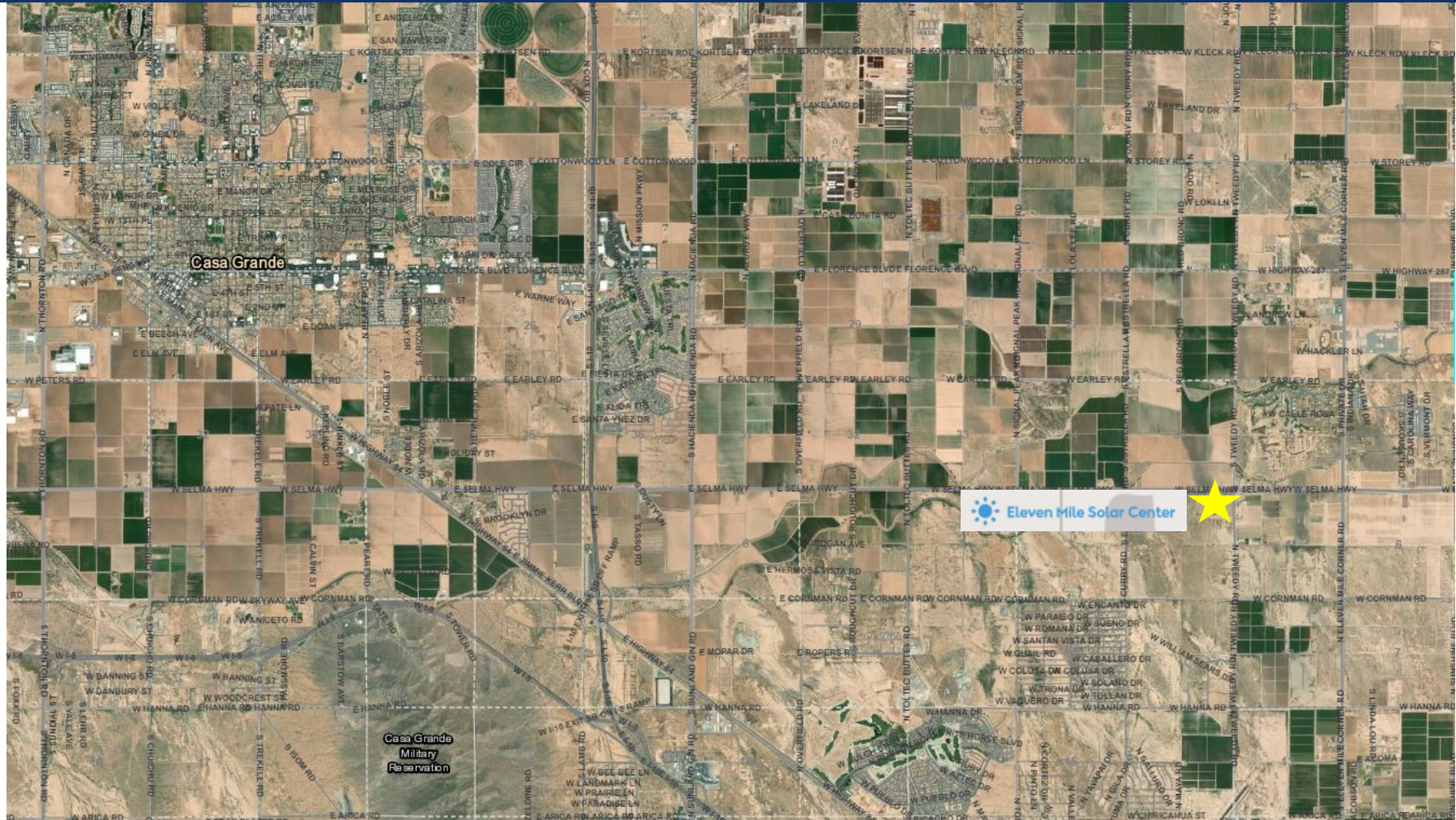
*Unlocking The Value of Real Estate*

This document/email has been prepared by West USA Realty Commercial Division for advertising and general information only. West USA Realty Commercial Division makes no guarantees, representations or warranties of any kind, expressed or implied, regarding the information including, but not limited to, warranties of content, accuracy and reliability. Any interested party should undertake their own inquiries as to the accuracy of the information. West USA Realty Commercial Division excludes unequivocally all inferred or implied terms, conditions and warranties arising out of this document and excludes all liability for loss and damages arising there from. This publication is the copyrighted property West USA Realty and /or its licensor(s). © 2022. All rights reserved.

**Kierland Corporate Center**  
 7077 E. Marilyn Rd., Bldg. 4 Ste. 207  
 Scottsdale, AZ 85254

# ADJACENT TO 11 MILE SOLAR CENTER AND 15 MINUTES FROM LUCID MANUFACTURING PLANT

## LOCATION MAP



**PAUL BLUM, J.D., CCIM**  
**602.369.7575**  
[Paulblum@WestUSA.com](mailto:Paulblum@WestUSA.com)

**REBECCA ROBERTS**  
**602.791.6262**  
[Rebeccaroberts@WestUSA.com](mailto:Rebeccaroberts@WestUSA.com)

**BLUM-ROBERTS GROUP**



*Unlocking The Value of Real Estate*

This document/email has been prepared by West USA Realty Commercial Division for advertising and general information only. West USA Realty Commercial Division makes no guarantees, representations or warranties of any kind, expressed or implied, regarding the information including, but not limited to, warranties of content, accuracy and reliability. Any interested party should undertake their own inquiries as to the accuracy of the information. West USA Realty Commercial Division excludes unequivocally all inferred or implied terms, conditions and warranties arising out of this document and excludes all liability for loss and damages arising there from. This publication is the copyrighted property West USA Realty and /or its licensors(s). © 2022. All rights reserved.

**Kierland Corporate Center**  
7077 E. Marilyn Rd., Bldg. 4 Ste. 207  
Scottsdale, AZ 85254