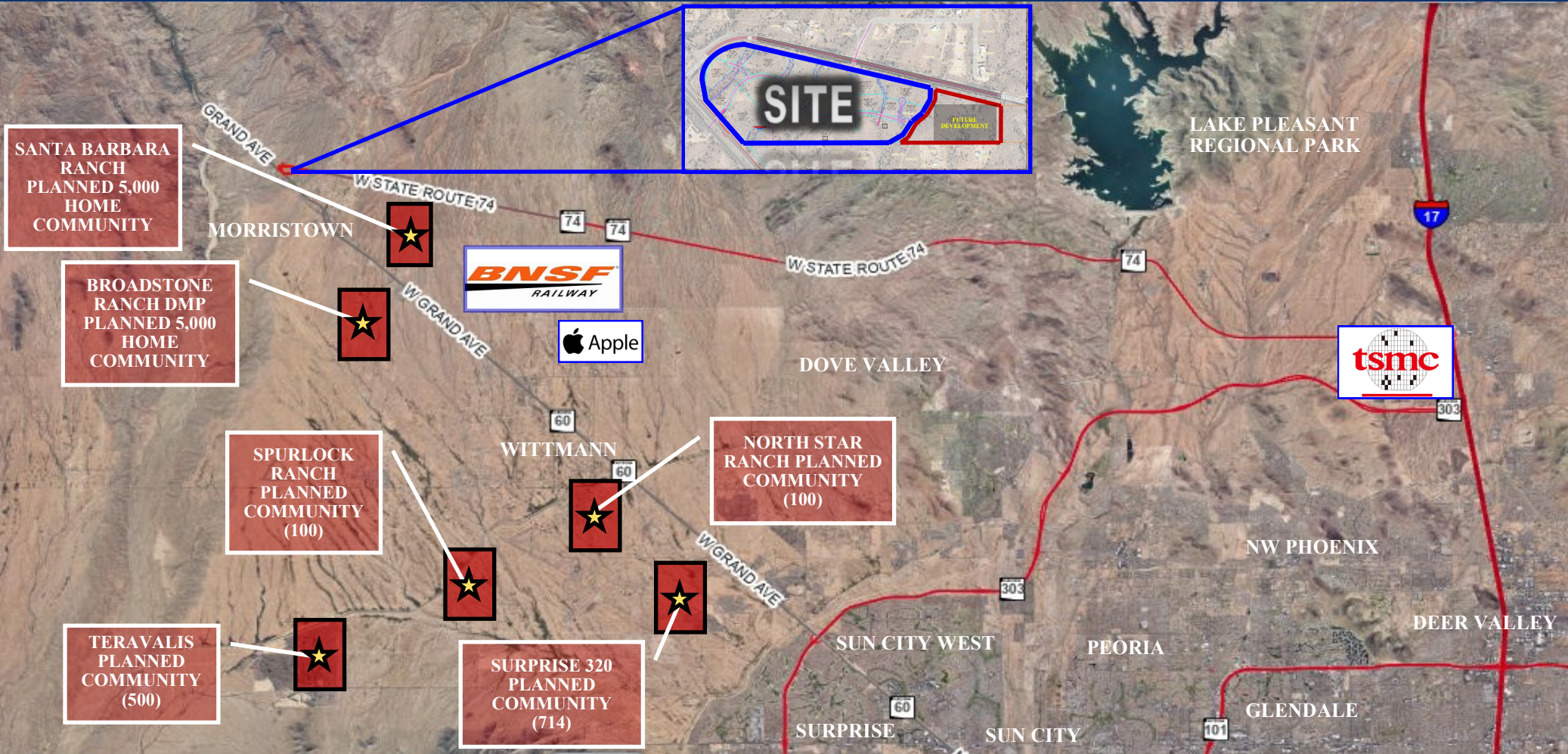


# ±58 ACRES DEVELOPABLE PARCELS FOR SALE

## SEC US 60 AND STATE ROUTE 74 MORRISTOWN, ARIZONA 85342



**PAUL BLUM, J.D., CCIM**  
602.369.7575  
[paul@blumroberts.com](mailto:paul@blumroberts.com)

**REBECCA ROBERTS**  
602.791.6262  
[rebecca@blumroberts.com](mailto:rebecca@blumroberts.com)

**BLUM-ROBERTS GROUP**



*Unlocking The Value of Real Estate*

This document/email has been prepared by West USA Realty Commercial Division for advertising and general information only. West USA Realty Commercial Division makes no guarantees, representations or warranties of any kind, expressed or implied, regarding the information including, but not limited to, warranties of content, accuracy and reliability. Any interested party should undertake their own inquiries as to the accuracy of the information. West USA Realty Commercial Division excludes unequivocally all inferred or implied terms, conditions and warranties arising out of this document and excludes all liability for loss and damages arising there from. This publication is the copyrighted property of West USA Realty and/or its licensees. © 2024. All rights reserved.

14350 North 87th Street  
Suite 180  
Scottsdale, AZ 85260

# ±58 ACRES DEVELOPABLE PARCELS FOR SALE

## SUMMARY

<b>Address:</b>	<b>Southeast Corner of US 60 and State Route 74 Morristown, Arizona 85342</b>
<b>Parcel Size:</b>	<b>±58 Acres</b>
<b>APN:</b>	<b>503-22-021A</b>
<b>Price</b>	<b>Price: \$4.00-12.00 Per Square Foot</b>
<b>Zoning:</b>	<b>RU-43 Maricopa County</b>
<b>Highlights:</b>	<b>Approximately 6 Miles From BNSF Land At The Vortex of Two Truck Routes: US 60 and Arizona SR 74 Approximately 30 Minutes From TSMC Gateway to Las Vegas</b>

**PAUL BLUM, J.D., CCIM**  
**602.369.7575**  
[paul@blumroberts.com](mailto:paul@blumroberts.com)

**REBECCA ROBERTS**  
**602.791.6262**  
[rebecca@blumroberts.com](mailto:rebecca@blumroberts.com)

**BLUM-ROBERTS GROUP**



*Unlocking The Value of Real Estate*

This document/email has been prepared by West USA Realty Commercial Division for advertising and general information only. West USA Realty Commercial Division makes no guarantees, representations or warranties of any kind, expressed or implied, regarding the information including, but not limited to, warranties of content, accuracy and reliability. Any interested party should undertake their own inquiries as to the accuracy of the information. West USA Realty Commercial Division excludes unequivocally all inferred or implied terms, conditions and warranties arising out of this document and excludes all liability for loss and damages arising there from. This publication is the copy-righted property of West USA Realty and/or its licensees. © 2024. All rights reserved.

**14350 North 87th Street**  
**Suite 180**  
**Scottsdale, AZ 85260**

# ±58 ACRES DEVELOPABLE PARCELS FOR SALE

## PARCEL LIST

<u>Parcel ID</u>	<u>Acres</u>	<u>Square Feet</u>	<u>Price Per Square Foot</u>
101	8.01	359,122	\$10.00
102	4.13	179,705	\$12.00
103	4.35	189,348	\$12.00
104	1.53	66,832	\$12.00
105	2.41	104,867	\$12.00
106	2.00	87,124	\$12.00
107	5.39	234,639	In Escrow
108	2.72	118,683	\$10.00
110	2.09	91,007	\$ 8.00
111	1.17	51,053	\$ 8.00
112	1.48	64,280	\$ 8.00
113	4.11	179,090	\$12.00
114	2.37	103,242	\$12.00
<u>RV Park</u>			
109	18.99	827,335	\$ 4.00

**PAUL BLUM, J.D., CCIM**

**602.369.7575**

[paul@blumroberts.com](mailto:paul@blumroberts.com)

**REBECCA ROBERTS**

**602.791.6262**

[rebecca@blumroberts.com](mailto:rebecca@blumroberts.com)

**BLUM-ROBERTS GROUP**



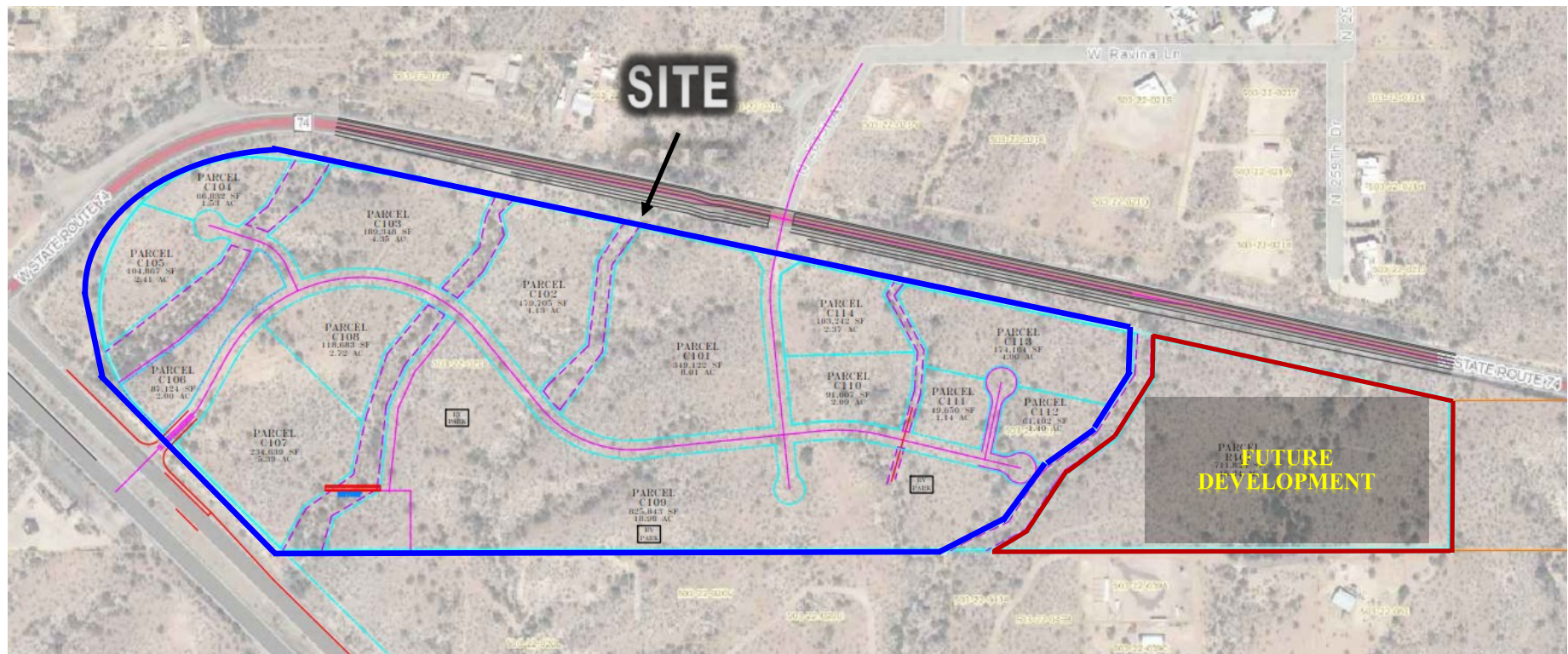
*Unlocking The Value of Real Estate*

This document/email has been prepared by West USA Realty Commercial Division for advertising and general information only. West USA Realty Commercial Division makes no guarantees, representations or warranties of any kind, expressed or implied, regarding the information including, but not limited to, warranties of content, accuracy and reliability. Any interested party should undertake their own inquiries as to the accuracy of the information. West USA Realty Commercial Division excludes unequivocally all inferred or implied terms, conditions and warranties arising out of this document and excludes all liability for loss and damages arising there from. This publication is the copy-righted property of West USA Realty and/or its licensees. © 2024. All rights reserved.

**14350 North 87th Street  
Suite 180  
Scottsdale, AZ 85260**

# ±58 ACRES NORTHWEST VALLEY LAND FOR SALE

## CONCEPTUAL PLAN



**PAUL BLUM, J.D., CCIM**  
**602.369.7575**  
[paul@blumroberts.com](mailto:paul@blumroberts.com)

**REBECCA ROBERTS**  
**602.791.6262**  
[rebecca@blumroberts.com](mailto:rebecca@blumroberts.com)

**BLUM-ROBERTS GROUP**



*Unlocking The Value of Real Estate*

This document/email has been prepared by West USA Realty Commercial Division for advertising and general information only. West USA Realty Commercial Division makes no guarantees, representations or warranties of any kind, expressed or implied, regarding the information including, but not limited to, warranties of content, accuracy and reliability. Any interested party should undertake their own inquiries as to the accuracy of the information. West USA Realty Commercial Division excludes unequivocally all inferred or implied terms, conditions and warranties arising out of this document and excludes all liability for loss and damages arising there from. This publication is the copyrighted property of West USA Realty and/or its licensees. © 2024. All rights reserved.

**14350 North 87th Street**  
**Suite 180**  
**Scottsdale, AZ 85260**

# ±58 ACRES DEVELOPABLE PARCELS FOR SALE

## PARCEL MAP



**PAUL BLUM, J.D., CCIM**  
**602.369.7575**  
[paul@blumroberts.com](mailto:paul@blumroberts.com)

**REBECCA ROBERTS**  
**602.791.6262**  
[rebecca@blumroberts.com](mailto:rebecca@blumroberts.com)

**BLUM-ROBERTS GROUP**



*Unlocking The Value of Real Estate*

This document/email has been prepared by West USA Realty Commercial Division for advertising and general information only. West USA Realty Commercial Division makes no guarantees, representations or warranties of any kind, expressed or implied, regarding the information including, but not limited to, warranties of content, accuracy and reliability. Any interested party should undertake their own inquiries as to the accuracy of the information. West USA Realty Commercial Division excludes unequivocally all inferred or implied terms, conditions and warranties arising out of this document and excludes all liability for loss and damages arising there from. This publication is the copyrighted property of West USA Realty and/or its licensees. © 2024. All rights reserved.

**14350 North 87th Street**  
**Suite 180**  
**Scottsdale, AZ 85260**

# ±58 ACRES DEVELOPABLE PARCELS FOR SALE

## REGIONAL MAP



**PAUL BLUM, J.D., CCIM**  
**602.369.7575**  
[paul@blumroberts.com](mailto:paul@blumroberts.com)

**REBECCA ROBERTS**  
**602.791.6262**  
[rebecca@blumroberts.com](mailto:rebecca@blumroberts.com)

**BLUM-ROBERTS GROUP**



*Unlocking The Value of Real Estate*

This document/email has been prepared by West USA Realty Commercial Division for advertising and general information only. West USA Realty Commercial Division makes no guarantees, representations or warranties of any kind, expressed or implied, regarding the information including, but not limited to, warranties of content, accuracy and reliability. Any interested party should undertake their own inquiries as to the accuracy of the information. West USA Realty Commercial Division excludes unequivocally all inferred or implied terms, conditions and warranties arising out of this document and excludes all liability for loss and damages arising there from. This publication is the copyrighted property of West USA Realty and/or its licensees. © 2024. All rights reserved.

**14350 North 87th Street**  
**Suite 180**  
**Scottsdale, AZ 85260**